

## **KS4 courses 2020-2022**

### **Contents**

Listed below are level 1 and 2 courses which will be offered to Year 10 pupils in KS4 in 2020-2022.

#### **GCSE**

Welsh Language	2
Welsh Literature	3
Welsh Second Language	4
English Language	5
English Literature	6
Mathematics	7
Science 1	8
Science 2	9
Triple Science	10
Business Studies	11 & 12
Religious Studies	13
Art, Craft & Design	14
Drama	15
Music	16
Physical Education	17
History	18
Geography	19
French	20
Technology – Engineering Design	21
Technology – Product Design	22
Health and Social Care	23

#### **Vocational GCSEs**

Hospitality and Catering	24
Information Technology	25
Designing the Built Environment (Ysgol Syr Thomas Jones)	26

#### **Other vocational**

Portal – “Sweet” L1/L2	27
BTEC Vehicle Technology Level 2 (Coleg Menai, Llangefni)	28
BTEC Public Services Level 2 (Coleg Menai, Bangor)	29
City & Guilds Hair and Beauty (Ysgol Uwchradd Bodedern) Level 2	30
City & Guilds Automotive Engineering Level 1	31
City & Guilds Construction Level 1	32
City & Guilds Hairdressing and Beauty (Coleg Menai, Bangor) Level 1	33

#### **Courses at a lower level than 1**

Pre-Vocational - Independent Living Skills (Coleg Menai)	34
--	----

Qualification Levels	35
----------------------	----

# **WELSH First Language**

## **(WJEC GCSE Full Course Level 1 & 2)**



### **What will I learn?**

There is no studying and learning to do in this subject, but you will develop your oral, reading and writing skills. The work is very similar to what you've been doing in year 9.

### **How will I learn it?**

You will have four lessons per week in Year 10 and Year 11. In these lessons a large number of you will study TWO GCSE subjects – Welsh First Language and Welsh Literature.

### **What will I need?**

Correct stationery for every lesson

### **How will I be assessed?**

One section of the course (the oral examination) will be assessed internally in the school. The work will then be sent to an external moderator during the course. The oral element will be equivalent to 30% of the final grade. Then, in June Year 11 you will sit two external examinations – 2 hours each. One exam focuses on reading and writing which includes description, narration and exposition and other reading and writing which includes argumentation, persuasion and instructional. The external examinations are equivalent to 70% of the final grade.

### **What happens after this course?**

Welsh First Language is a core subject and so will count as one the three GCSE subjects which are necessary for access to Further Education - Mathematics, Science, Welsh First Language OR English.

Following this course will show your employer that you are completely bilingual, and in Modern Wales being bilingual is an essential qualification.

### **Career ideas!**

Teacher	Accountant
Translator	Author
Interpreter	Call Centre Worker
Journalist	Psychologist
Working in the Media	Magazine editor

### **Want to know more?**

Contact Mrs Wendy Griffiths in the Welsh Department or you can visit Careers Wales online: [www.gyrfacymru.com](http://www.gyrfacymru.com) to see more career ideas.



### **What will I learn?**

You will study three aspects in particular: a series of poems, the novel and a film which will be discussed in the oral exam. The poetry will be examined in January Year 11 and the novel at the end of Year 10.

### **How will I learn it?**

You will have four lessons per week in Year 10 and 11. In these lessons a large number of you will study TWO GCSE subjects – Welsh First language and Welsh Literature.

### **What will I need?**

Correct stationery for every lesson

### **How will I be assessed?**

Two sections of the course are assessed internally, the Non-examination Assessment [Two pieces of work] and the oral examination to discuss the film in March / April in Year 11. During January, Year 11 you will sit an examination on the poems and at the end of Year 10 you will sit an examination on the novel.

### **Career ideas!**

Teacher  
Translator  
Interpreter  
Journalist  
Working in the Media  
Accountant  
Author  
Call Centre Worker  
Psychologist  
Magazine Editor

### **Want to know more?**

Contact Mrs Wendy Griffiths in the Welsh Department or you can visit Careers Wales online: [www.gyrfacymru.com](http://www.gyrfacymru.com) to see more career ideas.

# **WELSH Literature**

## **(WJEC GCSE Full Course Level 1 & 2)**

# WELSH Second Language (WJEC GCSE Full Course Level 1 & 2)

## What will I learn?

The examination is intended for applicants:

- Who have received Welsh mainly through a Welsh Second Language programme of study in primary school and / or secondary school;
- Who have not followed a Welsh Study programme of study in Key Stage 3.



No suitable candidate who is able to sit GCSE Welsh (First Language) should be considered for this examination.

Pupils will study themes related to contemporary life.

- EMPLOYMENT
- WALES AND THE WORLD
- YOUTH

## How will I learn it?

You will have four lessons per week in the years 10 and 11.

## What will I need?

Correct stationery and resources for every lesson

## How will I be assessed?

The pupils' oral, reading and writing work will be assessed – 50% in the form of an examination and 50% under school assessment.

## What happens after this course?

Welsh Second Language is necessary for entry into Further Education in Wales. Following this course will show your employer that you are partially bilingual, and in modern Wales being bilingual is a necessary qualification.

## Career ideas!

Teacher	Accountant
Translator	Author
Interpreter	Call Centre Worker
Journalist	Psychologist
Working in the Media	Magazine Editor

## Want to know more?

Contact Mrs Wendy Griffiths in the Welsh Department or you can look at Careers Wales online: [www.gyrfacymru.com](http://www.gyrfacymru.com) to see more career ideas. For more information about the syllabus visit [www.wjec.co.uk](http://www.wjec.co.uk).



## What will I learn?

English is regarded as a single unified course, whether candidates are being assessed in English alone or in both English and English Literature. The course seeks to develop in pupils:

- the ability to communicate accurately, appropriately and effectively in speech and writing;
- the ability to understand and respond imaginatively to what they hear, read and experience in a variety of media;
- the capacity to enjoy and appreciate the reading of literature;
- the capacity to understand themselves and others.

## How will I learn it?

The content of the syllabus will provide for a range of experiences of (a) oral communication, (b) reading and (c) writing designed to develop the skills listed above. This will involve sustained writing and sustained reading of various kinds, including the reading of whole works of literature rather than extracts only.

## What will I need?

Correct stationery in lessons.

## How will I be assessed?

This is a linear course with 80% of the grade based on performance in two examinations at the end of year 11.

### ***Controlled Assessment 20%***

This will consist of: two speaking and listening tasks that will be recorded.

A] Presentation

B] A group discussion of a subject chosen by WJEC

### ***External Assessment 80%***

This will consist of 2 x 2hour examinations testing Reading Comprehension and Writing skills. 50% of the available marks for all writing assessments are allocated to sentence structure, punctuation and spelling.

## What happens after this course?

- Stay in school – AS/A course. Both options provide a good foundation for anyone wishing to follow the course at AS or A2 Level.
- Further Education – college. English is one of the GCSEs needed for entry into Further Education.
- Employment.

## Career ideas!

Teacher

Author

Psychologist

Magazine Editor

Translator

Accountant

Call centre worker

Working in the Media

Journalist

Interpreter

## Want to know more?

Contact Mrs Tracey Stretton in the English Department or you can visit Careers Wales online: [www.gyrfacymru.com](http://www.gyrfacymru.com) for more career ideas.

## What will I learn?

In addition to the content mentioned in the English Language course you will read and respond to a wide range of Literature texts. You will be required to show, through extensive study and reading, your ability to:

- learn directly about certain pieces of literature;
- understand literature in different ways, including deeper understanding of themes and contexts;
- recognise and appreciate how authors create literary effects;
- respond sensitively and informatively to that which is read.



## How will I learn it?

In class you will be using a variety of techniques, including group and pair work, whole class discussion, media clips etc to extend your response and skills of analysis.

## What will I need?

Correct stationery and books for each lesson. Meeting deadlines is important.

## How will I be assessed?

This is a unitised course of three units, two of which will be completed in year 10 with the final 40% examination unit taken at the end of the course.

### External Assessment 35% (2 hours)

*(Novel and comparison of unseen poetry)*

### External Assessment 40% (2 hours)

*(Drama and contemporary prose)*

### Controlled Assessment 25%

*(Drama: Shakespeare study 12.5 %)*

*Poetry: Welsh Writing in English based on poems from WJEC Anthology 12.5%)*

## What happens after this course?

- Stay in school – AS/A course. Both options provide a good foundation for anyone wishing to follow the course at AS or A2 Level.
- Further Education
- Employment.

## Career ideas!

Teacher	Translator
Interpreter	Accountant
Author	Call Centre Worker
Psychologist	
Magazine Editor	
Journalist	

## Want to know more?

Contact Mrs Tracey Stretton in the English Department or you can visit Careers Wales online: [www.gyrfacymru.com](http://www.gyrfacymru.com) for more career ideas.



### What will I learn?

Pupils will follow a BRAND NEW GCSE COURSE that began in September 2015. This will continue to extend their understanding of the key ideas in mathematics, previously introduced in Key Stage 3, as well as presenting totally new concepts such as:

- Trigonometry
- Loci
- Cumulative Frequency

### How will I learn?

Classroom tasks are set with the purpose of challenging pupils and to assess their understanding of each unit of work following classroom discussion. Each individual should try to understand and aim for the objectives set in each unit by completing each task to the best of their ability. High expectations are set by all members of the department and all pupils are expected to produce work of high standard at all times.

### What will I need?

Students will need the following usual Mathematical resources:

- Geometry set
- Scientific Calculator (available through school)
- Revision Resources (available through school)

### How will I be assessed?

The New GCSE will comprise of two separate aspects of Maths; 'Numeracy' and 'GCSE Maths'. Your son/daughter will sit one or both GCSE's in the summer of 2018.

There will be a three tier entry system:	Foundation:	Grades C-G
	Intermediate:	Grades B-E
	Higher:	Grades A*-C

Both GCSE's will be assessed in two units at the end of the course:

Unit 1: Non-calculator	Unit 2: Calculator
------------------------	--------------------

### Where can I get more specific information?

For detailed information please go to the **WJEC website** and follow the links to GCSE Maths.

**wjec.co.uk**      Then select **Mathematics and GCSE**.

There you will find the full syllabus for both courses plus specimen assessment materials.

### For students not following a GCSE course

These students will follow Entry Pathways Mathematics. They will study to achieve an Entry Pathways Award at Level 2. There is no exam in this course. The students will receive credits as they study various units of work. They must provide evidence to demonstrate that assessment criteria have been met. This is now well established and students really enjoy the course with Mrs. Michelle Hughes.

### What happens after the course?

Obtaining a GCSE in Maths, C or better if possible, will open many doors for you in the future, whether applying for jobs or college courses.

Those students who achieve a B grade or better at GCSE have the opportunity of carrying on to do Maths at AS Level and if successful continue to complete the full A2 Level.

### Career ideas!

Maths will open many doors for you in the future when applying for jobs.

Please go the following websites to see a film made by our Year 9 pupils highlighting career opportunities.

<http://www.youtube.com/watch?v=sh7Gj0uFO1w>

<http://www.mathscareers.org.uk/article/mpegs-mathemateg-maths-mpegs/>

### Additional information

Our school 'MOODLE' will be updated as the new GCSE Maths course develops.

# Science 1 (Yr 10)

(WJEC G.C.S.E Full Course Level 1 and 2)



## **What will I learn?**

Students will follow a course in Biology, Chemistry and Physics which will contain the following:

**Biology** – Cells and movement across membranes, Respiration and the respiratory system in humans, Digestion and the digestive system in humans, Circulatory system in humans, Plants and photosynthesis, Ecosystems and human impact on the environment.

**Chemistry** – The nature of substances and chemical reactions, Atomic structure and the Periodic Table, Water, The ever-changing Earth, Rate of chemical change.

**Physics** – Electric Circuits, Generating Electricity, Making use of Energy, Domestic electricity, Features of waves.

## **How will I learn it?**

- 6 lessons a week split into 2 lessons for each science

## **What will I need?**

- Correct stationery in lessons.

## **How will I be assessed?**

3 x 1 hour 15 mins exams (15%) one for each – Biology, Chemistry and Physics at the end of year 10.

## **What happens after this course?**

- Stay in school – Science 2 in Year 11.

## **Career ideas!**

- Employed in Health Care eg Doctor, Dentist, Nurse
- Environmental Aspects – Environmental Health, Conservation
- Forensic Science

## **Want to know more?**

Contact Mr Eirian Davies in the Science Department or you can look at Careers Wales online: [www.gyrfacymru.com](http://www.gyrfacymru.com) for more career ideas.





## What will I learn?

Students will follow a course in Biology, Chemistry and Physics which will contain the following:

**Biology** – Classification and biodiversity, Cell division and stem cells, DNA and inheritance, Variation and evolution, Response and Regulation, Disease, defence and treatment.

**Chemistry** – Bonding, structure and properties, Acids, bases and salts, Metals and their extraction, Chemical reactions and energy, Crude Oil, fuels and carbon compounds.

**Physics** - Distance, speed and acceleration, Newton's laws, Work and Energy, Stars and planets, Types of Radiation, Half-life.

## How will I learn it?

Through theory and practical work

## What will I need?

Suitable stationery and a scientific calculator.

## How will I be assessed?

3 x 1 hour 15 min exams, (15%) one for each – Biology, Chemistry and Physics **at the end of Yr.11.**

Practical tasks (10%) will comprise of a scientific investigation

## What happens after this course?

- Stay in school – AS/A level course.
- Further Education – college.
- Employment.

## Career Ideas!

Biomedical Scientist

Clinical Biochemist

Microbiologist

Forensic Scientist

Scientific Analysis

Toxicologist

Scientific Research and Development

Agriculture Research Scientist

Analytical Chemist

Clinical Microbiologist

Clothing/Textile Technologist

Colour Technologist

Food Technologist

Marine Scientist

Metallurgist

Meteorologist

Microbiologist

Oceanographer

Pharmacologist

## Want to know more?

Contact Mr Eirian Davies in the Science Department or you can look at Careers Wales online: [www.gyrfacymru.com](http://www.gyrfacymru.com) for more career ideas.

# Science 2(Yr 11)

(WJEC G.C.S.E Full Course Level 1 and 2)

# Triple Science (Yr 10 & 11)

(WJEC G.C.S.E. Full Course Level 1 and 2)



## What will I learn?

A vast range of interesting and relevant topics in today's life will be learnt. The subject is split into the three specialist subjects of Biology, Chemistry and Physics. The main topics followed are:

### BIOLOGY:

In addition to the Science 1 and Science 2 course material:

- Ecosystems, nutrient cycles and human impact on the environment
- Kidneys and homeostasis
- Micro-organisms and their applications

### CHEMISTRY:

In addition to the Science 1 and Science 2 course material:

- Limestone
- Reversible reactions.
- Industrial processes and important chemicals

### PHYSICS:

In addition to the Science 1 and Science 2 course material:

- The total internal reflection of Waves
- Seismic Waves
- Kinetic Theory
- Electromagnetism
- Further motion concepts
- The Universe
- Nuclear Decay and Nuclear Energy

### How will I learn it?

- Learning through practical work, research, computing, group and individual work.
- Interpreting information.
- Analysing data.

Using up to date text books and revision guides.

### What will I need?

Suitable stationery and a scientific calculator.

### How will I be assessed?

- 3 x 1 hour 45 mins exams one for each subject at the end of year 11.
- 2 Practical tasks.

### What happens after this course?

- Stay in school – AS/A2 level course in one or more of the Sciences. This is the best option for anyone wishing to follow the Sciences at AS or A2 level as it bridges the gap better than the additional Higher Award Science.
- Further Education, College or Employment.

### Want to know more?

Contact Mr Eirian Davies in the Science Department or you can look at Careers Wales online: [www.gyrfacymru.com](http://www.gyrfacymru.com) for more career ideas.

## Year 10 / 11 - GCSE - **Business** - “What’s it all about”



# GCSE BUSINESS STUDIES

*“GCSE Business introduces learners to the business world, empowering them to develop as commercially minded and enterprising individuals. Learners will have the opportunity to develop a wide range of skills, enabling them to use business information critically, to develop arguments, to make justified decisions and to prepare them for further study and career pathways”*

Learners must consider a Welsh perspective if the opportunity arises naturally from the subject matter and if its inclusion would enrich learners’ understanding of the world around them as citizens of Wales as well as the UK, Europe and the world.

### ASSESSMENT (explained)

- The Examining Board is **WJEC** – Assessment is through **2 x written examinations (A\* - G)** - sat in the school hall in the summer of Year 11.
- Students study various Business topics. Following the completion of each topic you will sit an internal *End of unit Test*. The test highlights your Knowledge, Strength and Weaknesses. Your performance in each test will be recorded by both yourself and your teacher. Your performance helps **us all** to build an accurate picture of how you are progressing....
- Just after the Christmas break in year 11 you will sit 2 x Full GCSE Exam “Mock” papers.

### **Unit 1: Business World:**

2 hours - 62.5% of qualification - 100 Marks

*A mix of short answer and structured questions based on stimulus material covering all of the specification content.*

### **Unit 2: Business Perceptions Written examination:**

1 hour 30 minutes - 37.5% of qualification - 60 Marks

*Data response questions covering all of the specification content.*

*Case study / 2 x sets of Data (NOT pre-released) with questions to follow.*

*10% of this qualification is assessed via QUANTITATIVE Skills “Maths & Numeracy”*

**THE FOLLOWING ARE THE KEY AREAS THAT YOU WILL STUDY / LEARN ABOUT.....”  
IN SIMPLE TERMS” ....**

### **THE BUSINESS ENVIRONMENT**

*We all have needs and wants...BUT...We can’t have everything we want!! Why?...What if we could have it all?...Would our money then become worthless?...Why do Businesses exist?...Do they all run for a Profit?...Who pays for the street lights? Education?...The Hospitals?... Why do businesses operate in certain places?...Who makes the rules?...WHO owns BMW?*

## THE EXTERNAL FACTORS

*What is the European Union? Are we friends??...Who is the prime Minister and what is their job?...Why do I / you / we pay tax? What if 50% of the population was unemployed? What are Exchange rates? Who makes the Laws?*

## BUSINESS STRUCTURE AND ORGANISATION

*So I'm the Managing Director....6 Managers report to me with 130 employees working under them!! Sole Traders, Partnerships, Ltd's, Plc's, Global, Multinational, National, Local.....Which is the biggest and why?*

## PEOPLE IN ORGANISATION / HRM

*You're FIRED!!...."But you can't just sack me"...Why? What are the rules?...Who pays my wages? What is the minimum wage?...Why do we bother going to work?...Why do you have to wear steel toecaps and a hard hat? I want my money back!*

## OPERATIONS / PRODUCTION

*Should a business produce (make) 1...2...3...100...1000 items?...Why do some businesses set up their business in China? India? Isn't it cheaper to buy in bulk?*

## MARKETING / SALES

*Could you sell "Ice to the Eskimos"...???...How do you know they want it?...What influences us to buy certain products?...How come after all these years Coca Cola is still the No1 soft drink in the world? Is it just luck? How does Facebook make money? Do you shop online?*

## BUSINESS FINANCE AND CONTROL

*The NUMBERS!!...Where does all the money come from? Why do Businesses keep an eye on their profits? Who needs to know? What is Profit?...What happens if you can't pay your bills?...Who pays Tax? Why?*

### WJEC - GCSE Business Studies RESULTS

	A* - C....
Summer - 2018	67%
Summer - 2019	100%



## What will I learn?

A qualification at any level will show you possess self-discipline, motivation, understanding and respect for others. Religious Studies is a course that gives you a much broader outlook on life. You will explore the relevance of religion to people's lives, understand them, and will be prepared for the multi-cultural, multi-faith world in which we live.

### Topics within the Course:

#### Unit 1 (Year 10):

- Beliefs, Teachings and Practices of 2 Religions - Christianity and Judaism.
- Religion and Philosophical Themes: **Life and Death** (The World; The origin and value of human life - Euthanasia and Abortion; Beliefs about death and the afterlife). **Good and Evil:** (Crime and Punishment, The Death Penalty, Forgiveness, Just War, Good, Evil & Suffering).

#### Unit 2 (Year 11):

- Beliefs, Teachings and Practices of 2 Religions - Christianity and Judaism.
- Religion and Ethical Themes: **Relationships** (Relationships; Sexual relationships; Issues of Equality-Gender prejudice and discrimination). Issues of **Human Rights**- (Human Rights and Social Justice; Prejudice & Discrimination; Issues of Wealth & Poverty).

### How will I learn it?

- Research skills.
- Learning through film, artefacts and visits.
- Interpreting information.
- Analysing issues.
- Forming and developing arguments.
- Appreciate different viewpoints.
- Using Information and Communication Technology.
- Multi-sensory and thinking skills activities.

### What will I need?

Correct stationery in lessons. Appropriate clothing for educational visits.

### How will I be assessed?

There will be two examination papers of 2 hours. One exam in Year 10, the other in Year 11.

### What happens after this course?

- Stay in school – GCSE in RS provide a good foundation for anyone wishing to follow the course at AS or A2 Level.
- Further Education – College.
- Employment.

### Career ideas!

If you want to work with people, caring, teaching, journalism, publishing, police force, with children, health, catering, leisure and tourism, work abroad or in a cosmopolitan setting, Religious Studies will give you plenty to think about and valuable expertise.

### Want to know more?

Contact Mrs Mefys Jones in the Religious Studies Department or you can look at Careers Wales online: [www.gyrfacymru.com](http://www.gyrfacymru.com) to see more career ideas.

# Art, Craft and Design

(WJEC G.C.S.E Full Course)

## What will I learn?

The course is mainly practical, with a host of opportunities for stimulating and creative experiences in activities relating to Art and Design



PORTFOLIO- It is set internally and developed from personal views and / or starting points given. Candidates are expected to work independently at home and to some extent, in the school. Work can be derived for the portfolio of the following areas.

Art and Design, Textile Design, 3D Design, Fine Art, Graphics and Photography.

EXAM - examination paper will include images (stimulus ), themes (trigger word) and tasks (something related to explanation and can provide guidance but not mandatory). The preparation period is 6 weeks and 10 hours under supervision to produce the finished piece of work.

## How will I learn it?

- Recording from direct experience, observation and imagination
- Develop ideas for your work, investigate visual sources of information and other sources
- Review, modify and refine work as it develops and achieves what is intended
- Giving your opinion on art

## What will I need?

Correct equipment. Sketchbooks and folders to keep work, these can be purchased from the department.

## How will I be assessed?

Pupils will be assessed internally on the portfolio which carries 60% of the marks.  
Final exam 40%

## What happens after this course?

- Stay in school courses to AS / A. Both courses provide a good foundation for anyone wishing to take the course for AS or A2.
- College.
- Work.

## Career ideas!

- |                    |               |
|--------------------|---------------|
| • Product Design   | • Animation   |
| • Graphic Designer | • Set Design  |
| • Artist           | • Education   |
| • Fashion Design   | • Photography |

## Want to know more?

To find out more about the course contact Mrs Mandy Roberts in the Art Department and for further details on the course visit [www.cbac.co.uk](http://www.cbac.co.uk) or visit Careers Wales on [www.careerswales.com](http://www.careerswales.com)



## What will I learn?

This course fosters creativity, personal growth, self confidence, analytical skills as well as exercising the imagination. You will have the opportunity to enjoy the subject as a performer, deviser and director. It also provides you with the opportunity to attend professional and community performances where you will develop your skills as informed and thoughtful audience members. You will create your own work within a group and perform it in front of your peers as well as study plays by other dramatists and have the opportunity to evaluate the work.

## How will I learn it?

Evaluate various thoughts and ideas.

Work as a part of a group and individually.

Research Skills.

Analyse scripts and authorial intentions.

Develop and communicate ideas.

Develop a range of practical, creative and performance skills.

Explore the impact of social, historical and cultural influences on drama.

Use IT and Communications.

## What will I need?

Correct stationery in lessons. The willingness to participate in various theatrical visits outside school hours and to contribute towards their cost.

## How will I be assessed?

All units cater for the full range of ability and allow access to grades A\*-G. There will be ONE devised **practical exam** assessed internally and the SECOND **practical exam** from a specific text will be assessed externally. The WRITTEN exam is 1½ hours on analysing **one set text** as an actor and then to **evaluate** a live performance you have seen.

## What happens after this course?

- Stay in school – AS/A course. The subject provides a good foundation for anyone wishing to follow the course at AS or A2 Level.
- Further Education – college.
- Employment.

## Career ideas!

If you want to work as an actor; with people; in Theatre with regards to sound, lighting, set, make-up, costume and designing; in Television; in education; as a Researcher; fostering skills that would be of advantage as a Solicitor, Policeman or Social Worker by understanding characters in full and develop skills to question and understand an individual's motives and the confidence to communicate and perform publicly, then Drama will give you plenty to think about and valuable expertise.

## Want to know more?

To find out more about the course speak to Mrs Heledd Lewis Jones, in the Drama Department. Or you could contact Careers Wales on: [www.gyrfacymru.com](http://www.gyrfacymru.com)

# D R A M A

(WJEC G.C.S.E Full Course Level 1 and 2)





## What will I learn?

You will learn about a wide range of styles by performing, listening and composing music within the following areas of study;

- Popular Music
- Forms and Devices in music
- Film Music
- Music for Ensemble

## How will I learn?

- Research skills
- Listening to different types of music.
- ICT skills when composing music.
- Rehearsing skills.
- Developing musical ideas.
- Solo and ensemble skills
- Key skills.

## What will I need?

Your chosen musical instrument.

## How will I be assessed?

Performing	35%	Solo or in a group
Composing	35%	One 'free' composition in Yr.10/ One under exam conditions in Yr.11.
Listening	30%	Exam paper 1½ hour on the 4 Areas of Study.

## What happens after this course?

You can study music at AS/A Level or a Performing Arts course. The course offers the foundation to different types of music that will be studied in further detail in years 12 and 13.

## Career Ideas!

If you enjoy playing in a band, performing individually or are interested in music technology, then the course offers you the opportunity to further develop these skills, as well as providing experience of performing and creating music outside the school. This course is suitable for anyone with an interest in pursuing a career as a teacher in primary or secondary education, in performing and the arts, or working in a music studio.

## Want to know more?

Contact Mrs Eleri Foulkes in the Music Department or you can visit Careers Wales online: [www.gyrfacymru.com](http://www.gyrfacymru.com) to see more career ideas.





## What will I learn?

The course is designed to:

- Encourage the purposeful and enjoyable practice and study of physical education.
- Allow candidates to select practical activities that take into account their previous achievement, personal interest and individual levels of motivation.
- Enable candidates to acquire self-esteem, respect for themselves and others and to understand various moral, ethical, cultural and social issues within the sporting world.
- Develop an understanding of, and a commitment to the requirements of living a healthy and active lifestyle.

### The Theory Areas.

Physical Fitness, Fitness Testing, Methods of Training, Factors Affecting Participation, Provision and Performance, Effects of Exercise on Body Systems, Nutrition, Safety in Sport, Skill and Psychological Factors Affecting Performance.

## How will I learn?

You will get three lessons a week. One theory lesson and two practical. More often than not most theory lessons will be taught in a practical way before going to a classroom to make notes and answer questions.

We also provide you with an opportunity to gain an extra qualification as part of the course. The Junior Sports Leader Award gives you the chance to be in charge of organising your own sport session, you will have a group of pupils from the local primary schools that you will teach for a session. Many employers find this type of extra qualification a great bonus, as it demonstrates to them your commitment levels, organisational skills and that you are trustworthy.

## What will I need?

Usual school kit for each lesson. Suitable clothing for practical work. A hoodie is available to buy from the department if desired.

## How will I be assessed?

The course is divided into two areas, the Practical (50%) and the Theory Written Exam Paper (50%). Candidates will have to be assessed in 3 areas of activity, we as a department will choose the best option for each candidate. There is one written exam paper, with some multiple choice questions and some extended writing questions.

## What is the follow-on to this course?

- Staying in school to do AS/A level. The course is an excellent foundation for anyone who wishes to follow the Physical Education course for AS or A2 or BTEC Level 3 Course.
- Further Education.
- The world of work.

## Skills

Organisational, Punctuality, Self-Confidence, Self-Esteem, Time-keeping, Target Setting, Planning, Problem Solving, Analysis, Risk Assessment.

## Career Ideas.

Physiotherapist, Doctor, Psychologist, Solicitor, Accountant, Bio-Chemist, Pharmacist, Nurse, Nutritionist, Dietician, Bio-Technologist, Chiropractor, Occupational Therapist, Manager, Armed Services, Teacher, Legal Executive, Choreographer, Childcare Assistant.

## Want to know more?

Contact Miss Iola Jones in the Physical Education Department. Or you can visit Careers Wales on: [www.gyrfacymru.com](http://www.gyrfacymru.com)

# Physical Education

(WJEC G.C.S.E Full Course Level 1 and 2)



## What will I learn?

**“History helps you to make sense of the world in which we live”.**

If you want to find out why Elizabeth I, Robert Peel or Clark Gable behaved as they did, then you need to choose History as a G.C.S.E. subject. It will help you develop the skills to look beyond the headlines, to ask questions properly, and to express your own opinions.

History trains your mind and teaches you to think and process information. It provides you with the skills employers are looking for.

You will study how crime and punishment has changed since 1500 and how events and personalities there shaped the world in which we live today. In contrast you will then **study Elizabeth I and the radical changes that took place in Wales and England** during her reign. You will also study the changes in the USA between 1919 and 1929. Finally, you will look at life in Britain during the 1930s.

## How will I learn it?

- Research skills.
- Learning through film, artefacts and visits.
- Interpreting information.
- Analysing sources.
- Forming and developing arguments as well as reaching judgments.
- Appreciate different viewpoints.
- Using Information and Communication Technology.
- Thinking skills activities.

## What will I need?

Correct stationery in lessons. Appropriate clothing for educational visits.

## How will I be assessed?

All units cater for the full range of ability and allow access to grades A\*-G. There will be 3 examination papers and a source based internally assessed assignment.

## What happens after this course?

- Stay in school – the course provides a good foundation for anyone wishing to follow the subject at AS or A2 Level.
- Further education – college.
- Employment.

## Career ideas!

If you want to work with people, Teaching, Journalism, Publishing, Police Force, Law, with children, Leisure and Tourism, work abroad or in a cosmopolitan setting, History will give you plenty to think about and valuable expertise.

## Want to know more?

For more information see Mrs Bethan Hughes Jones in the History Department. Or visit the Careers Wales website at: [www.gyrfacymru.com](http://www.gyrfacymru.com) for more career ideas.

Or you could visit the Careers Wales website on: [www.gyrfacymru.com](http://www.gyrfacymru.com) for more career ideas.



## What shall I learn?

A qualification in Geography is evidence that you have the ability and the knowledge to look at Geographical problems objectively as a neutral observer. The Geography course looks at the elements of the earth and at their relevance to people's lives from all reasonable standpoints, not favouring one standpoint over another.

**Topics within the course:** During year ten we shall be studying elements that are key to Geography such as Landscapes and Physical Processes, Rural-urban Links Tectonic Landscapes and Hazards Coastal Hazards and their Management. In year eleven we shall be looking at Weather, Climate and Ecosystems, Development and Resource Issues, Social Development Issues and Environmental Challenges. During the course learners will be given the opportunity to develop their skills of geographical enquiry through fieldwork. They shall undertake two fieldwork enquiries, each in a contrasting environment.

## How shall I learn?

- Doing investigations and following the investigative method.
- Learning through fieldwork.
- Collecting, analysing and interpreting information.
- Discussing information presented by the teacher.
- Respecting different standpoints in an objective and unbiased way.
- The Key Skills of numeracy, literacy and ICT will be presented within investigations.
- Using a range of skills including thinking skills and graphics.

## What shall I need?

Correct equipment for every lesson. Suitable clothing for fieldtrips.

## How shall I be assessed?

Linear examination- taken at the end of the two years of study

Non-tier graded paper - A\*,A,B,C,D,E,F,G & U.

The course will be assessed by two examinations and one investigation task.-

Paper 1- **Unit 1: Changing Physical and Human Landscapes**

**Written examination: 1 hour 30 minutes 40% of qualification 83 marks**

Paper 2- **Unit 2: Environmental and Development Issues**

**Written examination: 1 hour 30 minutes 40% of qualification 83 marks**

Course work- **Unit 3: Fieldwork Enquiry**

**Examination assessment: 2 hours 30 minutes**

**20% of qualification 44 marks**

## What is the follow-on to this course?

- Staying in school to do AS/A level. The course is an excellent foundation for anyone who wishes to follow the Geography course for AS or A2.
- Further education.
- The world of work.

## Career Ideas.

If you wish to work as an Environmentalist, as a Schoolmaster or Schoolmistress, as a Forester, as a Town and Country Planner, as a Lecturer, as a Geologist, as a Meteorologist or as a National Park Officer. Geography will give you a useful qualification, valuable skills and a great deal to think about.

## Want to know more?

Contact Miss Rachel Thomas in the Geography Department. Or you can look at Careers Wales website on: [www.gyrfacymru.com](http://www.gyrfacymru.com) for more career ideas.



## What will I learn?

I will learn about Youth Culture, Lifestyle, Customs and Traditions, Home and Locality, The Wider World, Global Sustainability, Current Study, Enterprise, Employability and Future Plans. I will learn how to communicate verbally, also by letter or e-mail. I will learn how to cope with speaking the language in a foreign country. There will be a real opportunity to make use of the language on a trip abroad offered in either Year 10 or 11.

## How will I learn it?

The course includes listening, speaking, reading and writing work in preparation for the various exams. The 4 skills are used regularly in lessons.

## What will I need?

A French-English dictionary would be useful but pupils can also use those at school or an on-line dictionary ([www.wordreference.com](http://www.wordreference.com)).

## How will I be assessed?

**Unit 1:** Speaking Oral test: 7-12 minutes (NON EXAM ASSESSMENT)

Three tasks: Role Play, photo card discussion, Conversation – Part 1 and Part 2.

**Unit 2:** Listening – Written examination: 35-45 minutes.

**Unit 3:** Reading – Written examination: 1hr-1hr 15 minutes

Reading tasks with non-verbal and written responses, including one translation task from French into English/Welsh.

**Unit 4:** Writing: Written examination: 1 hour – 1 hour 30 minutes

Writing tasks including one translation task from English/Welsh into French.

## What happens after this course?

It's possible to continue to study AS / A level course. The course provides a good foundation for anyone who would wish to pursue the course at AS or A2 level.

Further Education - the study of language in many areas can be combined with a number of subjects, not only studying a Language or Language & Business degree but also Languages with Law, Medicine / Care Work, Science etc. Employment – being able to offer additional languages these days is very important in the current global and competitive world of work.

## Career ideas!

Whichever career you pursue, an extra language can help you in many jobs. Areas to work in are:

- Interpreting
- Journalism
- Armed Forces
- Finance and Banking
- Marketing and advertising
- Police
- Teaching
- Translation
- Business and International Business
- Linguistics
- TV and film
- Law
- Sports
- Medicine and nursing
- Aid and Charity Work
- Food and drink

## Want to know more?

Contact Mrs Einir Williams or Mrs Nia Edwards in the French Department.





Pupils will work with a range of systems and materials, investigate, design, make and evaluate innovative products. During the course pupils will gain an understanding of the general classification, working characteristics, physical properties, availability and cost of a range of systems.

### What will I learn?

- The design process
- Understanding the materials
- Understanding of a range of commercial Manufacturing Processes
- Range of systems.
- CAD (Computer Aided Design)
- CAM (Computer Aided Manufacture)
- Time Management
- Effective Communication

### What will I need?

2H & HB pencil, protractor, coloured pencils, file 'A4 Lever-arch' (For written work), 'A3 Flip File' (for coursework), and Gwaithlyfr Books reviewed are available for purchase from the section.

### How is the subject delivered?

The subject has a very practical aspect to the learning process but there is a written element that must be completed.

### What next?

AS/A Level Product Design

Job Ideas - Engineer, Electrician, Aerospace, Apprentice, Coleg Menai.

### How will I be assessed?

#### 50 % Design & Make task

- analysis of the problem
- write a design specification
- generate a range of ideas
- develop a solution
  - produce the details of the final solution

The other twenty hours are used to

- plan the making process
- carry out the making
- evaluate project

**50% Exam** is taken at the end of the course. Unlike other subjects, the graphics exam is not split into tiers (higher and foundation). The exam paper takes 2 hours.

### Further Information?

Contact Mrs Mutembo in the Technical Department

# Engineering Design

(WJEC G.C.S.E Full Course)





# Product Design

Product design offers a unique opportunity for learners to identify and solve real problems by designing and making products or systems. Through studying Product Design, learners will be prepared to participate confidently and successfully in an increasingly technological world; and be aware of, and learn from, wider influences on design and technology, including social/cultural, environmental and economic factors.

What will I learn?

The importance of creativity and innovation to good design practice, to actively engage in the processes of design and technology to develop as effective and independent learners. Understand the key principles of designing and making, skills and understanding to make design decisions in order to make a quality prototype. Analyse existing products and produce practical solutions to meet needs, wants and opportunities, recognising their impact on quality of life.

How will I be assessed / learning? A\*-G

## 50% Design and Make Task

Learners will choose one challenge and then go on to

- Identifying design possibilities.
- Developing a design brief and specification.
- Generating and developing design ideas.
- Making a prototype.
- Evaluating a prototype's fitness for purpose

## 50% Exam

A mix of short answer, structured and extended writing questions assessing candidates' knowledge and understanding of product design.

What would be needed?

- Pencils
- Colouring Pencils
- Black ballpoint pens
- Calculator
- File R4 (to hold theory work)
- File A3 (to hold coursework)

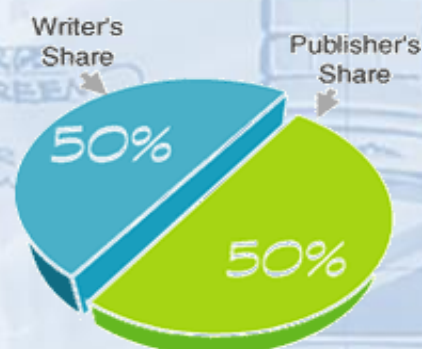
What happens after this course?

Product Design AS & Full A Level course.

Career Ideas!

Engineer, Graphic Designer, Architect, Product Designer, Designer

Want to know more? Talk to Mrs. Cleo Thomas-Jones



“There are three responses to a piece of design – yes, no and WOW!  
*Wow is the one to aim for.*”

MILTON GLASER





## **What will I learn?**

A qualification at any level will show you possess self-discipline, motivation, understanding and respect for the care of others. Health and Social Care is a course that gives you a much broader outlook on life. You will explore the relevance of health and social care to people's lives, understand them, and will be prepared for the multi-cultural, multi-faith world in which we live and work.

### **Topics within the Health and Social Care course –**

Care needs of individuals of all ages. Types of care services, main health, social care and early years of all ages, health, social care & early years work roles, human growth & development, & factors affecting this, development of self-concept, life changes, maintaining & promoting health & well-being for all ages.

### **How will I learn it?**

Research skills.

Learning through a variety of differing situations

Interpreting information about topics and using case studies, role play.

Analysing issues involved in Health & Social Care.

Forming and developing arguments about the above

Appreciate different viewpoints about Health Social Care & Early Years topics.

Using Information and Communication Technology.

Multi-sensory and thinking skills activities.

### **What will I need?**

A keen desire to follow this vocational course and commitment to work hard outside lessons to produce quality coursework. Correct stationery in lessons.

### **How will I be assessed?**

There are four units – 2 being coursework and two written exams.

### **What happens after this course?**

AS/A course. This subject option provides a sound foundation for anyone wishing to follow the course at AS/A level.

Further Education – F.E.College where there are many courses at different levels.

Employment - there are jobs available locally in this sector.

### **Career ideas!**

If you want to work with people: Health e.g. Nursing, Caring, Teaching, with children, Police Force, work abroad: Health & Social Care will give you many future options and valuable expertise.

### **Want to know more?**

For more information see Mrs Nia Edwards in school.

Or you could visit the Careers Wales website on: [www.gyrfacymru.com](http://www.gyrfacymru.com) for more career ideas.

# **Health and Social Care GCSE**



## What will I learn?

The Hospitality and Catering will raise awareness in: Health, safety and hygiene  
Food preparation, cooking and presentation, Nutrition and menu planning,  
The industry, job roles, equipment. Environmental considerations.

## How shall I learn?

- The course involves written work in preparation for the theory examinations.
- Also, there will be practical sessions based on food preparation where the basic skills are learnt. These are necessary in order to prepare them for two practical tasks for controlled assessment.

## How shall I be assessed?

WJEC level 2 Award is equivalent to one pass at GCSE A\* - C.

Unit 1: 40% The Hospitality and Catering Industry

Unit 2: 60% Hospitality and Catering in Action

Controlled task based on catering skills- preparing and serving food.

## What will I need?

- Students will be expected to wear the appropriate whites during practical sessions to maintain a high standard of personal hygiene.
- Some personal equipment will be required for some tasks.
- Ingredients for the tasks.

## What is the follow-on to this course?

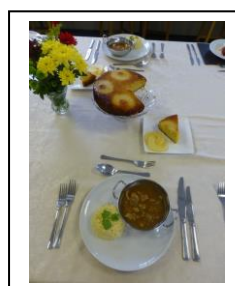
WJEC Level 3 Food, Science and Nutrition (certificate and diploma)

Level 3 NVQ Diploma in Advanced Professional Cookery

Level 3 Advanced Diploma in Food Preparation and Cookery Supervision

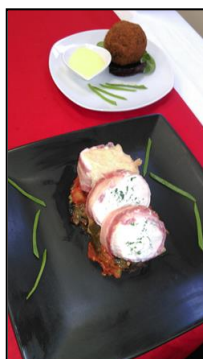
## Career Ideas

- Chef — assistant or head chef
- Waiter/ess
- Hotel manager
- EHO (environmental health officer)



## Further Information

Contact Mrs. Mutembo or Mrs. Thomas –Jones







### **What will I learn?**

The Cambridge Nationals GCSE is a new qualification that concentrates on giving students an opportunity to learn about the new developments in ICT and how to meet the demands of companies. Students are given a case study and then asked to create documents for different companies.

### **Units**

**Unit 1 - Theory Exam (Summer Y10) - 20%**

**Unit 2 - Controlled Assessment (start of Y10) - 30%**

**Unit 3 - Theory Exam (Summer Y11) - 20%**

**Unit 4 - Controlled Assessment (Y11) - 30%**

### **How will I learn it?**

Lessons are a mixture of practical, theory and learning new skills in software. The theory lessons will be the ground work for the written exams which will take place in the school hall.

### **What will I need?**

- An interest in ICT
- Confidence using ICT
- Working with Others skills
- USB Memory Stick

### **How will I be assessed?**

The marks given in each of the units are all added together to give a final grade. The grades available are A\* - G. There are no tiers in exams - every student will sit the same exams.

### **What happens after this course?**

You can go on to study ICT at AS/A level after completing the course. You can also go to study a BTEC at college too.

### **Career ideas!**

Teacher  
ICT Technician  
Creating web pages  
Software Programmer  
Engineer  
Graphic Designer"  
ICT support

### **Want to know more?**

Contact Mr Gwyn Anwyl at the DT & ICT Faculty or you can look at Careers Wales online: [www.gyrfacymru.com](http://www.gyrfacymru.com) to see more ideas for a career.

# **Information Technology**

(WJEC)

## WJEC Designing the Built Environment Level 2 Awards

### Build the world around you

Construction is the creation of the built environment. It covers all stages of the construction process, including creating the initial ideas and designs, building the structure and ensuring that everything continues to work smoothly after it is complete. The variety of skills required by the modern construction industry means there is a wide range of career opportunities available.

You could work in the following areas:

- Infrastructure – roads and rail
- Public and private housing
- Public non-housing - schools
- Industrial
- Commercial – offices and retail
- Repair and maintenance

There are over **150** occupations available to start a career in construction .

### How shall I learn?

The course consists of 3 units:

- **Planning potential of construction projects**
- **Drawing construction plans**
- **Building structures and materials**

Specialist work experience and site visits will be organised that will directly link the more theoretical aspects of the course completed in school.

### How shall I be assessed?

WJEC Design and Built Environment level 2 Award is equivalent to **one pass at GCSE A\* - C**. The course is in the form of controlled assessments (coursework) which is moderated and marked externally.



### What is the follow-on to this course?

You could continue your studies at school and Coleg Menai (level 3, higher) adding to your qualifications and specialising in a chosen field, then progress to work in the Construction industry or continue education in university.

### Career Ideas.

Examples of careers would include:

Architect, Architectural Technician, Buyer, Computer Aided Designer Technician, Estimator, Site Inspector, Plant Technical Support, Roofing Technician, Sales in construction, Site Engineer, Structural engineer, Quantity surveyor, Site manager, Electrical engineer, Mechanical engineer and many more.

**For more detailed information about this course, please contact Mr Sion Williams, Technology dept.**




**Construction Industry Training Board (CITB) Wales** *"CITB are delighted to have been able to work with the WJEC to develop the Level 1 / 2 Construction Qualifications which are based on industry approved content and provide the opportunity to inspire the next generation of young people to consider Construction in its widest context as a Careers of Choice."* - **Gareth Williams, Qualifications and Careers Manager, CITB Wales**

# Sweet

Succeeding with  
Education, Employment  
& Training

## What is Sweet\*?

Sweet\* is a learning and skills development programme offering a specialist BTEC Level 1 or 2 qualification in Personal & Social Development (PSD).

Sweet\* is well placed to respond to many of the recommendations published in the Welsh Government's 'Successful Futures', a review of the school curriculum.

## Who is it for?

Available in both English and Welsh, its engaging format is designed and tailored to suit learners of all abilities. The qualification can be claimed from the age of 14.

## Appropriate for

- Secondary Schools
- Youth Services
- Criminal Justice Provisions
- Community Organisations
- EDTAS
- Special Schools

## Welsh Baccalaureate

The PSD units are specifically structured to provide the Welsh Baccalaureate teaching and learning support for schools. The content helps learners to develop the same skills required across the Skills Challenges and prepares them for their controlled assessments - a perfect complement!

Bagloriaeth  
Cymru  
Welsh  
Baccalaureate

95%

## 95% Success Rate

In 2014/15, 95% of our registered learners completed the programme and successfully achieved the qualification.

## Portfolio Based

Sweet\* is a high quality, fully resourced package with a portfolio based approach to assessment involving no examination.

## Additional Learning Needs

Sweet\* can be adapted for visually impaired learners and learning outcomes can be evidenced in alternative formats.

ALN

## The Value of Sweet\*

	Performance Points	Level 1+2 Threshold %	GCSE Equivalent	Q1W Ref No	Q1W Approval/ Designated No
Level 1	Award	12.5	10 (L1)	Half (D - G)	500/5859/9
	Certificate	25.0	20 (L1)	Full (D - G)	500/6829/5
Level 2	Award	23.0	10 (L1, L2)	Half (A* - C)	600/8867/9
	Certificate	46.0	20 (L1, L2)	Full (A* - C)	600/8866/7
					C00/0544/8
					C00/0544/9

## Programme Chapters

The new edition of our PSD resource is written to incorporate both the Personal and Social Education and Welsh Baccalaureate learning outcomes.

The core themes of both curricula are embedded across 8 chapters. The first 5 chapters are focussed

on PSE resulting in a BTEC Level 1 Award (min. 6 credits). The final 3 chapters offer 2 pathways (Level 1 or 2) reflecting the Welsh Baccalaureate Skills Challenges and achieves a full BTEC Certificate qualification (min. 13 credits).



Newport High School  
Teacher

The subjects covered by the Sweet\* PSD course are relevant to our learners. It is easy to deliver because the resources are self contained and give plenty of opportunity for discussion. The support given by everyone within the Sweet\* team is top quality and gives our learners the chance to succeed.

## Benefits to the Learners

- ✓ Improved Employability Skills
- ✓ Increased Confidence & Self-Esteem
- ✓ Healthier Lifestyle & Well-Being
- ✓ Boosted Motivation
- ✓ Developed Social Skills
- ✓ Greater Independence



## **What will I learn?**

The BTEC Extended Certificate in Vehicle Technology is designed for learners who are interested in working with motor vehicles at an extended level, and who wish to develop an academic grounding in specialist skills and knowledge to help them either enter employment or move on to further vocational education and training.

Areas available to focus may include: vehicle engine system principles, vehicle science and applied mathematics or vehicle layout and operation of vehicle systems.

## **How will I learn?**

The course is based on the Llangefni Coleg Menai site for 3 hours a week in Year 10 and 11 and transport will be provided from and back to your school. The course is a mix of classroom and practical tasks and you will get a chance to prepare and practise your skills before you are assessed so that you know and understand what you will have to do. The course is equivalent to two GCSEs (A\* - C).

## **What will I need?**

Students will be required to wear suitable personal protective clothing (safety boots and overalls) which will be available at the college.

## **How will I be assessed?**

You will produce a log book and portfolio, which is assessed mainly by your course tutor .

## **What happens after this course?**

After Year 11, successful candidates may use their qualification as a stepping stone towards entering employment in the vehicle repair and maintenance industry.

## **Job Ideas!**

- Vehicle repair and maintenance industry
- Automotive Engineering
- Vehicle Technician

**Want to know more?** To find out more about this course, visit the following web page:

<http://www.edexcel.com/quals/firsts10/vehicle/Pages/default.aspx>

or contact: [www.careerswales.com](http://www.careerswales.com)

## What will I learn?

This course will help you to learn:

- About the types of jobs you could work in and what it would be like to work in the uniformed Public Services Industry;
- Knowledge of public service, and how to help different types of members of the public in a range of different situations.
- Improving health and fitness for entry into the uniformed public services,

eg Police, Fire Service, Paramedics, Coast Guards, Armed Forces.

## How will I learn?

You will spend a full morning or afternoon at Coleg Menai, Bangor site. The course is a mix of classroom and compulsory practical based tasks, which could include team building activities, fitness, navigation, hill walking and orienteering. You will get a chance to prepare and practise your skills before you are assessed so that you know and understand what you will have to do.

## How will I be assessed?

You will produce coursework which is assessed by your course tutor and the awarding body. There will also be a series of practical tasks so that you can demonstrate your knowledge of public service skills.

## What happens after this course?

At the end of this course, here are some of the pathways available:-

- Follow a mix of vocational and academic courses as part of a school / Coleg Menai partnership, eg Level 3 BTEC Certificate / Subsidiary Diploma / AS / A Level.
- Follow a Public Service qualification at level 2 or 3 at Coleg Menai, eg BTEC Level 2 Diploma, BTEC Level 3 Subsidiary Diploma, Diploma or Extended Diploma.
- Follow an NVQ qualification in a related sector at level 2 or level 3 at Coleg Menai.

Ultimately, degrees and professional qualifications can be achieved by following any of these pathways.

## Job Ideas! Entry to training as:

- Policeman/woman
- Paramedic
- Armed Forces
- Fire Service

## Want to know more?

To find out more about this course visit the following web page:

<http://qualifications.pearson.com/en/qualifications/btec-specialist-and-professional-qualifications/public-and-uniformed-services/btec-specialist-teamwork-and-personal-development-in-the-community-l2.html#tab-1>

Or contact: [www.careerswales.com](http://www.careerswales.com)

# Public Services

(BTEC L2 Award in Public Services)

# Creative Hair and Beauty

## City & Guilds Level 2 Certificates in Creative Hair & Beauty Studies

### What will I learn?

This course will help you learn:

- About the types of jobs and salons you could be working in and what it would be like to work in the hair and beauty industry;
- How to colour, perm and style hair, provide basic manicure and pedicure, hand care and how to keep a work area clean tidy.
- About basic salon reception duties, how to treat customers, your personal presentation and your attitude to work and money.

### How will I learn?

The course will be taught in the salon at Ysgol Uwchradd Bodedern for a 3 hour a week in year 10 and year 11. You will be provided with transport to and from Bodedern. You will be required to complete some tasks back at your school . The course is a combination of folio tasks, on line assignments and practical. You will have an opportunity to practice your skills before you are assessed so that you know exactly what to do. You will also have the opportunity to visit national exhibitions,annual shows,college and local hair and beauty salons.

### What will I need?

Students will be required to provide suitable salon clothing and shoes: - appropriate shoes, black skirt or trousers and plain white or black top; no jewellery and if you have long hair it should be tied back.

### How will I be assessed?

Through a combination of practical assessments, observation, coursework, written and oral tests.

### What happens after this course?

After this, you will be well prepared for work and/or to start an apprenticeship in the hair and beauty industry. But, if you don't fancy carrying on with hair and beauty, the experience of working on a vocational course will be valuable to you if you intend to choose another vocational path which is better suited to your needs. Your careers adviser will be able to help you with your choices for the next stage of your career.

### Job Ideas!

- Hairdresser
- Beauty Therapist/Alternative Therapist
- 

### Want to know more?

To find out more about this course you should ask Mrs Susan Hughes

Or contact: [www.careerswales.com](http://www.careerswales.com)



## What will I learn?

This course will help you to learn:

- About the types of jobs and places you could work in and what it would be like to work in the automotive industry;
- How to do basic mechanical equipment servicing and scheduled maintenance jobs, sheet metal working, cutting and welding, how to keep a work area clean & tidy and how to work safely in the automotive industry;
- About environmental issues, health and safety and law in the workplace.

## How will I learn?

The course is based at the Llangefni Coleg Menai site for 3 hours per week in Year 10 and 11 and transport will be provided from and back to your school. The course is a mix of classroom and practical tasks and you will get a chance to prepare and practise your skills before you are assessed, so that you know and understand what you will have to do.

## What will I need?

Students will be required to wear suitable personal protection clothing (safety boots and overalls) which will be available from the College.

## How will I be assessed?

You will produce a log book and portfolio which is assessed mainly by your course tutor.

## What happens after this course?

After Year 11, you could go on to the City and Guilds Auto Maintenance and Repair or a day release City and Guilds Auto Maintenance course. You could also study a full-time EAL Performing Engineering Operations Level 2 course at the college. After all this, you will be well prepared for work and/or to start further training in the automotive industry. But, if you don't fancy carrying on with automotive engineering, you could choose other suitable qualifications depending on what you want to look at next. Your careers adviser will be able to help you with your choices when you leave school.

## Job Ideas!

- Car Mechanic
- Heavy Vehicle Mechanic
- Engineer / Technician

## Want to know more?

To find out more about this course, visit the following web page:

<http://www.cityandguilds.com/qualifications-and-apprenticeships/engineering/mechanical/7682-performing-engineering-operations#tab=information&acc=level1>

Or contact: [www.careerswales.com](http://www.careerswales.com) Neu cysylltwch â: [www.gyrfacymru.com](http://www.gyrfacymru.com)

# Automotive Engineering

(City & Guilds NVQ Level 1 in Performing Engineering Operations)

# Construction



## **What will I learn?**

This course will help you to learn:

- About the types of jobs and building sites you could work in and what it would be like to work in the construction industry;
- How to do basic Brickwork, Plastering, Joinery, Painting and Decorating, how to keep a work area clean & tidy and how to work safely in the construction industry;
- About environmental issues, health and safety and law in the workplace.

## **How will I learn?**

The course is based on the Llangefni Coleg Menai site for 3 hours a week in Year 10 and 11 and transport will be provided from and back to your school. This course is a mix of classroom and practical tasks and you will get a chance to prepare and practise your skills before you are assessed so that you know and understand what you will have to do.

## **What will I need?**

Students will be required to wear suitable personal protection clothing (safety boots and overalls) which will be available from the College.

## **How will I be assessed?**

You will produce coursework which is assessed mainly by your course tutor. At the end of each course unit, you will complete a practical task exam that will test your knowledge.

## **What happens after this course?**

After Year 11, you could go on to the City and Guilds Construction Skills level 2 or a day release ICA/NVQ level 2 construction course. After all this, you will be well prepared for work and/or to start further training in the construction industry.

But, if you don't fancy carrying on with construction, you could choose other suitable qualifications depending on what you want to look at next. Your careers adviser will be able to help you with your choices when you leave school.

## **Job Ideas!**

- Bricklayer
- Painter and Decorator
- Plasterer
- Joinery

## **Want to know more?**

To find out more about this course, visit the following web page:

<http://www.cityandguilds.com/qualifications-and-apprenticeships/construction/construction/6219-construction-skills#tab=information&acc=level1>

Or contact: [www.careerswales.com](http://www.careerswales.com)

**COURSE NOT SUITABLE FOR LEARNERS WITH ECZEMA**



## What will I learn?

This course will help you to learn:

- About the types of jobs and salons you could work in and what it would be like to work in the hair and beauty industry.
- How to do basic colouring and perms (**pupils will apply temporary colour to each other's hair**), apply basic make-up, perform a basic manicure and how to keep a work area clean & tidy.
- About basic salon reception duties, your personal presentation and your attitude to work and money.

**How will I learn?** The course is based on the Bangor Coleg Menai site for 3 hours a week in Years 10 and 11 and transport will be provided from and back to your school. This course is a mix of classroom and practical tasks and you will get a chance to prepare and practise your skills before you are assessed so that you know and understand what you will have to do.

**What will I need?** Learners will be required to provide suitable salon clothing and shoes - full shoes, black skirt or trousers and plain white top, wear minimal jewellery and have long hair tied back.

**How will I be assessed?** You will produce coursework which is assessed mainly by your course tutor. At the end of the course, you will sit an on-line multiple choice exam that will test your knowledge.

**What happens after this course?** After Year 11, you could go on to the City and Guilds Diploma Level 2 in Hairdressing or Beauty Therapy or a Foundation Modern Apprenticeship Level 2. After all this, you will be well prepared for work and/or to start an apprenticeship in the hair and beauty industry. But, if you don't fancy carrying on with hair and beauty, you could choose other suitable qualifications depending on what you want to look at next. Your careers adviser will be able to help you with your choices when you leave school.

## Job Ideas!

- Hairdresser
- Beauty Therapist
- Alternative Therapist

## Want to know more?

To find out more about this course, visit the following web page:

<http://www.cityandguilds.com/Courses-and-Qualifications/hairdressing/hairdressing/3001-hairdressing-and-beauty-therapy> Or contact: [www.careerswales.com](http://www.careerswales.com)

**THE COURSE IS NOT SUITABLE FOR LEARNERS WITH NUT ALLERGIES**

# Hairdressing & Beauty

(City & Guilds Level 1 Certificate in an Introduction to the Hair & Beauty Sector)

# Entry Award in Independent Living – Household Skills

## Pre-Vocational

### **What will I learn?**

This course will help you to learn:

- About College life and what it will be like to come to College full time.
- About your own strengths and qualities and how these match to College courses so that you can plan for your ideal job. Work with you to identify what you are good at.
- How to do basic independent tasks which are involved in everyday living; how to keep a work area clean & tidy and how to work safely in the College; provide opportunities to make use of your strengths.
- About environmental issues and every day health and safety.
- Help you gain the life skills you need in and out of college.
- Make choices for your future.

### **How will I learn?**

The course is based at the Llangefni Coleg Menai site for 3 hours a week in Year 10 and Year 11 and transport will be provided from and back to your school. This course is a mix of classroom and practical tasks and you will get a chance to prepare and practice your skills so that you know and understand what you will have to do.

### **How will I be assessed?**

You will produce a portfolio which is assessed by your course tutor.

### **What happens after this course?**

After Year 11, you could go on to pre vocational courses at the college. After all this, you will be well prepared for work and/or to start further training in the vocational area of your choice.

Your careers adviser will be able to help you with your choices when you leave school.

### **Want to know more?**

Get in touch with your Head of Year at school and/or Deputy Head and follow the links below for an example of the units delivered:

<http://www.nocn.org.uk/>

## **ENTRY LEVEL**

Foundation Level courses below  
GCSE level

## **LEVEL 1**

Courses which are equivalent to GCSE at  
grades D – G.

## **LEVEL 2**

Courses which are equivalent to GCSE at  
grades A\* - C  
Includes GCSE and BTEC Level 2

## **LEVEL 3**

Courses which are on a level equivalent to AS  
and A Level.  
Includes BTEC Level 3